



MATERIAL FOR CONSTRUCTION

KA VILLAGE

PHUKET

ISSUE DATE 2025 09 27



MATERIAL FOR CONSTRUCTION
**KA VILLAGE
PHUKET**

SHINKOLITE 6 mm. Thk.
CLEAR COLOR/ STEEL STRUCTURE WITH EXPOXY
COLOR PAINT

SHINGLE ROOF GREY COLOR
WITH MEMBRANE AND OSB BOARD

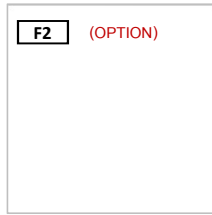
FOLDED ZINC GUTTER DRAIN
WITH FASCIA BOARD



SPECIFICATION : FLOOR FINISHED



F1
PRIME CENTRO NERO
60 X 60 9mm.Thk. (MATT)
450 ฿/sq.m.



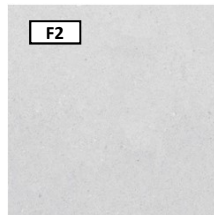
F2 (OPTION)
PRIME WHITE
60 X 60 9mm.Thk. (GLOSS)
450 ฿/sq.m.



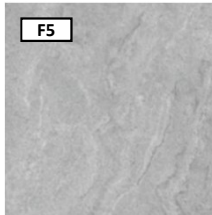
F3
ROYAL BASSWOOD NATURAL
20 X 120 9mm.Thk. (MATT)
750 ฿/sq.m.



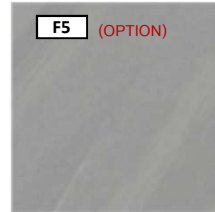
F4
ROYAL LISTELLO GRIS 950 ฿/sq.m.
60 X 120 9mm.Thk. (SOLIDO)



F2
ROYAL SANVI STONE BIANCO
60 X 60 9mm.Thk. (MATT)
750 ฿/sq.m.



F5
PRIME SINCR0 GRAPHITE
60 X 60 16mm.Thk. (MATT)
1200 ฿/sq.m.



F5 (OPTION)
PRIME GRANITI GRIS
60 X 60 9mm.Thk. (MATT) 450 ฿/sq.m.

SPECIFICATION : WALL FINISHED



TOA : K7042 WHITISH
EXTEROR : SUPER SHIELD
INTERIOR : DURACLEAN



TILE : ROYAL TRAVERTINE GREY
750 ฿/sq.m.

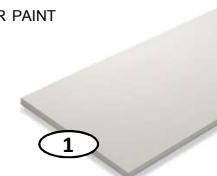


BLACK SLATE 30X50 cm. 400 ฿/sq.m.

SPECIFICATION : CEILING PANELS



CEMENT CEILING BOARD SCG
COLOR PAINT



GYPSUM BOARD PLASTERING
COLOR PAINT



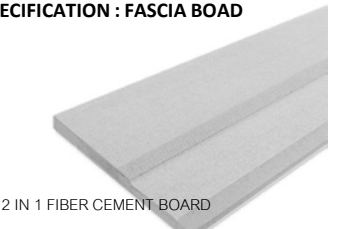
MOISTURE RESISTANT
GYPSUM BOARD COLORPAINT

SPECIFICATION : ARTIFICAIL WOOD



ARTIFICAIL WOOD (PRANK)
1743 ฿/sq.m.
iW1-95
● ทาบ (ตบ.) : 15
● กว้าง (ตบ.) : 95
● ยาว (ตบ.) : 300
● แผ่น/ตบ. : 3.5
● น้ำหนัก (กก./แผ่น) : 15

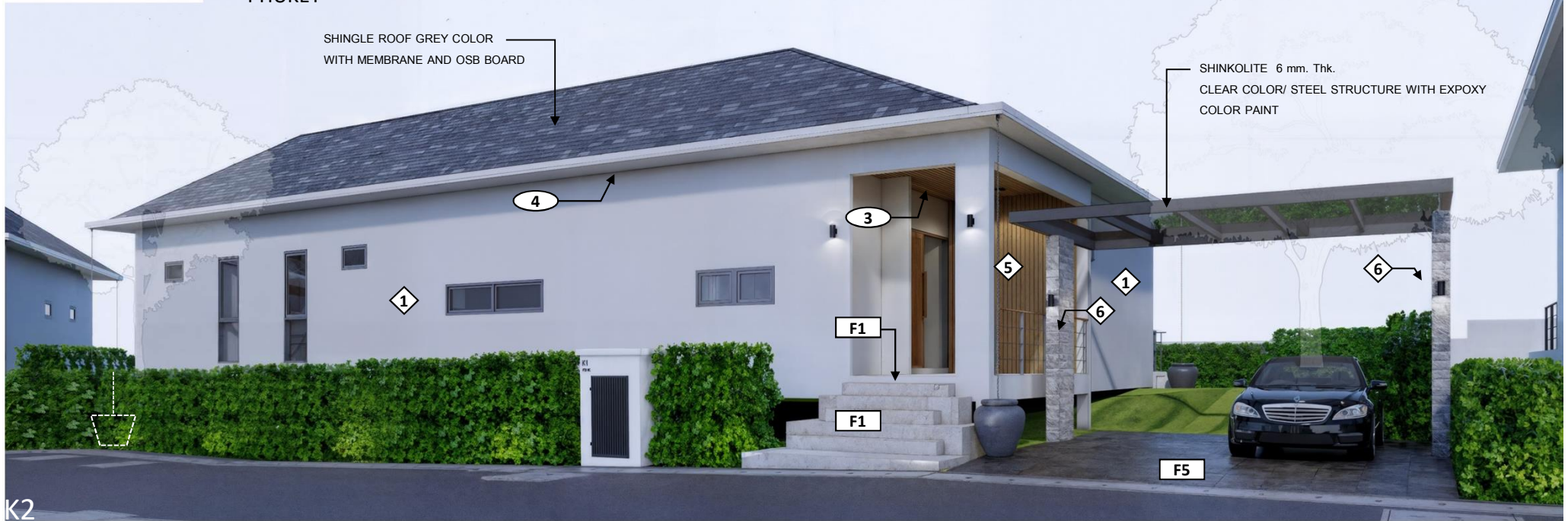
SPECIFICATION : FASCIA BOAD



2 IN 1 FIBER CEMENT BOARD



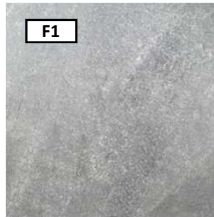
MATERIAL FOR CONSTRUCTION
**KA VILLAGE
PHUKET**



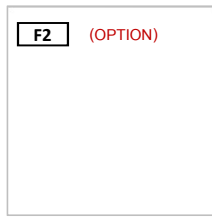
SHINGLE ROOF GREY COLOR
WITH MEMBRANE AND OSB BOARD

SHINKOLITE 6 mm. Thk.
CLEAR COLOR/ STEEL STRUCTURE WITH EXPOXY
COLOR PAINT

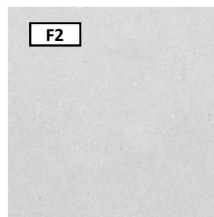
SPECIFICATION : FLOOR FINISHED



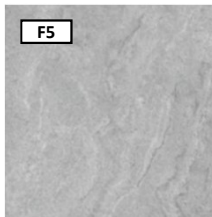
F1
PRIME CENTRO NERO
60 X 60 9mm.Thk. (MATT)
450 ฿/sq.m.



F2 (OPTION)
PRIME WHITE
60 X 60 9mm.Thk. (GLOSS)
450 ฿/sq.m.



F2
ROYAL SANVI STONE BIANCO
60 X 60 9mm.Thk. (MATT)
750 ฿/sq.m.



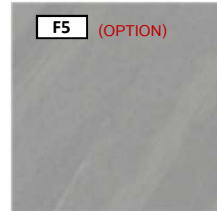
F5
PRIME SINCR0 GRAPHITE
60 X 60 16mm.Thk. (MATT)
1200 ฿/sq.m.



F3
ROYAL BASSWOOD NATURAL
20 X 120 9mm.Thk. (MATT)
750 ฿/sq.m.



F4
ROYAL LISTELLO GRIS 950 ฿/sq.m.
60 X 120 9mm.Thk. (SOLIDO)



F5 (OPTION)
PRIME GRANITI GRIS
60 X 60 9mm.Thk. (MATT) 450 ฿/sq.m.

SPECIFICATION : WALL FINISHED



TOA : K7042 WHITISH
EXTERIOR : SUPER SHIELD
INTERIOR : DURACLEAN



TILE : ROYAL TRAVERTINE GREY
750 ฿/sq.m.

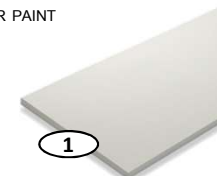


BLACK SLATE 30X50 cm. 400 ฿/sq.m.

SPECIFICATION : CEILING PANELS



CEMENT CEILING BOARD SCG
COLOR PAINT



GYPSUM BOARD PLASTERING
COLOR PAINT



MOISTURE RESISTANT
GYPSUM BOARD COLORPAINT

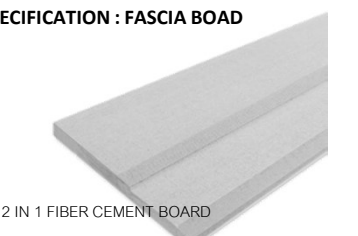
SPECIFICATION : ARTIFICIAL WOOD



1743 ฿/sq.m.

- ทา (ซม.) : 15
- กว้าง (ซม.) : 95
- ยาว (ซม.) : 300
- หนา/ตม. : 3.5
- ไม้หนัก (ทก./หนา) : 15

SPECIFICATION : FASCIA BOARD



2 IN 1 FIBER CEMENT BOARD

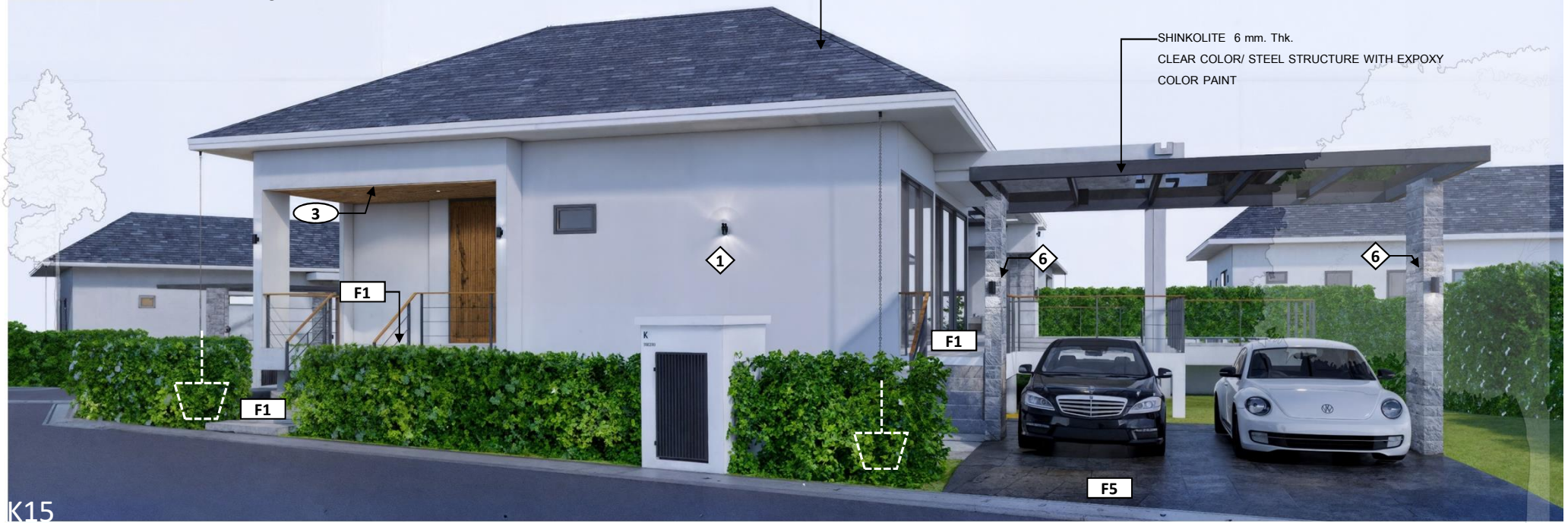


MATERIAL FOR CONSTRUCTION

KA VILLAGE
PHUKET

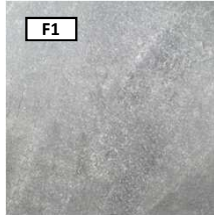
SHINGLE ROOF GREY COLOR
WITH MEMBRANE AND OSB BOARD

SHINKOLITE 6 mm. Thk.
CLEAR COLOR/ STEEL STRUCTURE WITH EXPOXY
COLOR PAINT

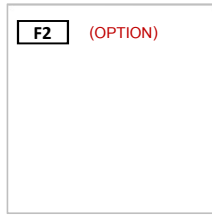


K15

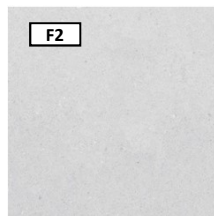
SPECIFICATION : FLOOR FINISHED



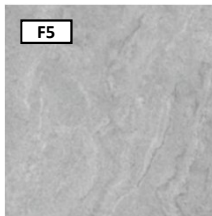
F1
PRIME CENTRO NERO
60 X 60 9mm.Thk. (MATT)
450 ฿/sq.m.



F2 (OPTION)
PRIME WHITE
60 X 60 9mm.Thk. (GLOSS)
450 ฿/sq.m.



F2
ROYAL SANVI STONE BIANCO
60 X 60 9mm.Thk. (MATT)
750 ฿/sq.m.



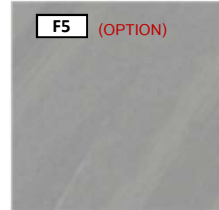
F5
PRIME SINCR0 GRAPHITE
60 X 60 16mm.Thk. (MATT)
1200 ฿/sq.m.



F3
ROYAL BASSWOOD NATURAL
20 X 120 9mm.Thk. (MATT)
750 ฿/sq.m.



F4
ROYAL LISTELLO GRIS 950 ฿/sq.m.
60 X 120 9mm.Thk. (SOLIDO)



F5 (OPTION)
PRIME GRANITI GRIS
60 X 60 9mm.Thk. (MATT) 450 ฿/sq.m.

SPECIFICATION : WALL FINISHED



TOA : K7042 WHITISH
EXTEROR : SUPER SHIELD
INTERIOR : DURACLEAN



TILE : ROYAL TRAVERTINE GREY
750 ฿/sq.m.

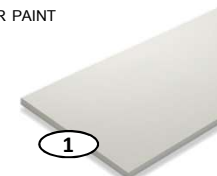


BLACK SLATE 30X50 cm. 400 ฿/sq.m.

SPECIFICATION : CEILING PANELS



4
CEMENT CEILING BOARD SCG
COLOR PAINT



1
GYPSUM BOARD PLASTERING
COLOR PAINT



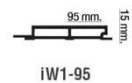
2
MOISTURE RESISTANT
GYPSUM BOARD COLORPAINT

SPECIFICATION : ARTIFICIAL WOOD

ARTIFICIAL WOOD (PRANK)



3 **5**
1743 ฿/sq.m.

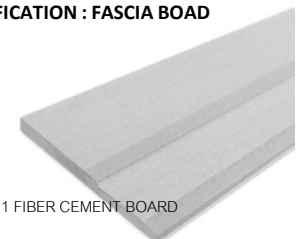


iW1-95



- ทา (หนา) : 15
- กว้าง (หนา) : 95
- ยาว (หนา) : 300
- หนา/ตม. : 3.5
- น้ำหนัก (กก./แผ่น) : 15

SPECIFICATION : FASCIA BOARD



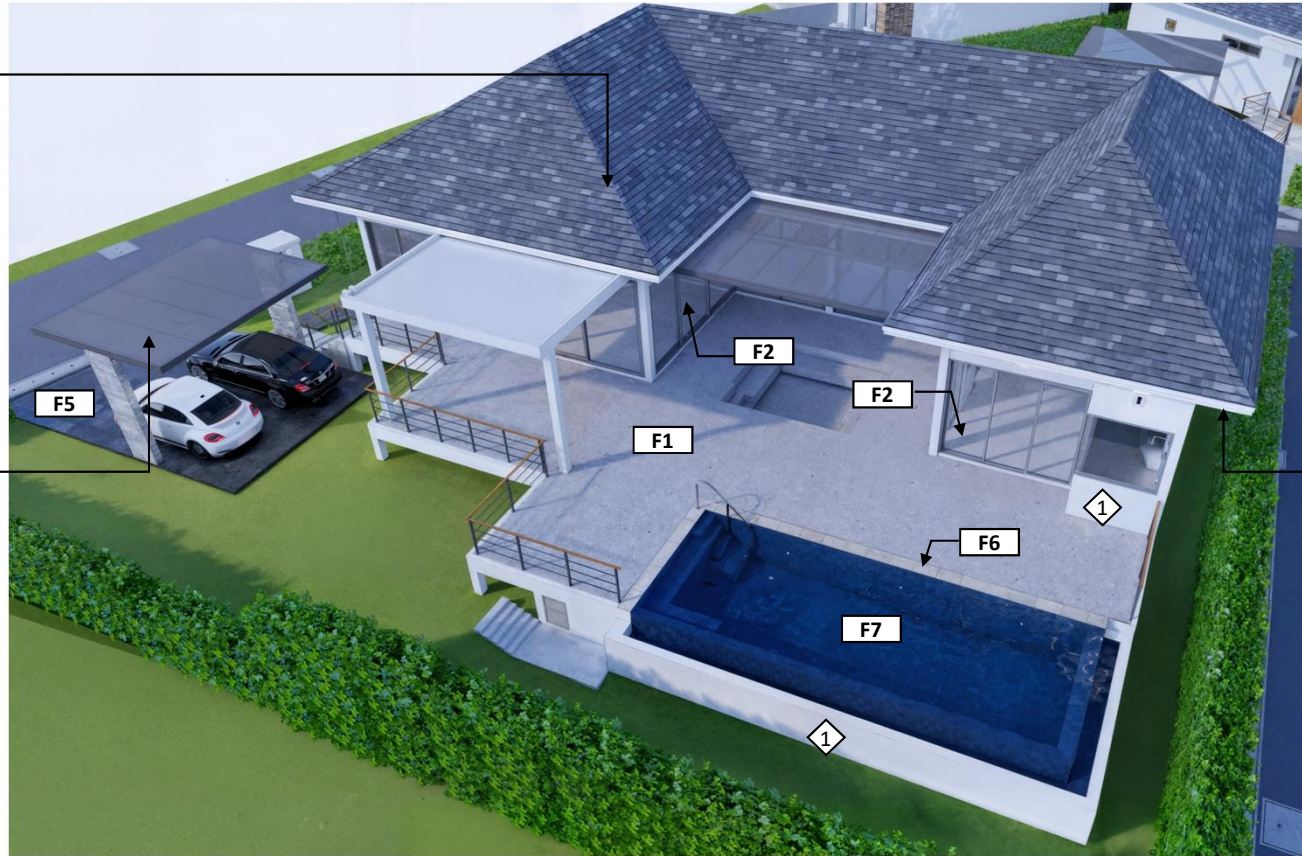
2 IN 1 FIBER CEMENT BOARD



SHINGLE ROOF GREY COLOR
WITH MEMBRANE AND OSB BOARD



SHINKOLITE 6 mm. Thk.
CLEAR COLOR/ STEEL STRUCTURE WITH EXPOXY
COLOR PAINT



FOLDED ZINC GUTTER
DRAIN
WITH FASCIA BOARD

SPECIFICATION : FLOOR FINISHED



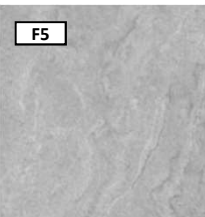
PRIME CENTRO NERO



PRIME WHITE

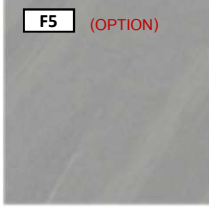


ROYAL BLASSWOOD NATURAL



PRIME SINCRO GRAPHITE

1200 ฿/sq.m.



PRIME GRANITI GRIS

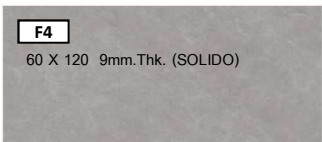
450 ฿/sq.m.



ROYAL SANVISTONE
BIANCO

60 X 60 9mm.Thk. (MATT)

750 ฿/sq.m.



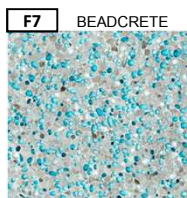
ROYAL LISTELLO GRIS

950 ฿/sq.m.



BLUE STONE

30X60 cm.



BEADCRETE

2000฿+/sq.m.

SPECIFICATION : WALL FINISHED



TOA : K7042 WHITISH
EXTERIOR : SUPER SHIELD
INTERIOR : DURACLEAN



TILE : ROYAL TRAVERTINE GREY

750 ฿/sq.m.

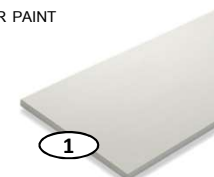


BLACK SLATE 30X50 cm. 400 ฿/sq.m.

SPECIFICATION : CEILING PANELS



CEMENT CEILING BOARD SCG
COLOR PAINT



GYPSUM BOARD PLASTERING
COLOR PAINT



MOISTURE RESISTANT
GYPSUM BOARD COLORPAINT

SPECIFICATION : ARTIFICIAL WOOD



1743 ฿/sq.m.

iW1-95

- ทาบ (บน) : 15
- กว้าง (บน) : 95
- ยาว (บน) : 300
- แผ่น/ตรม. : 3.5
- น้ำหนัก (กก./แผ่น) : 15

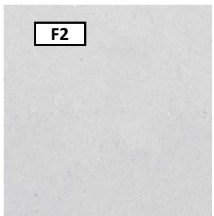
SPECIFICATION : FASCIA BOARD



2 IN 1 FIBER CEMENT BOARD



SPECIFICATION : FLOOR FINISHED



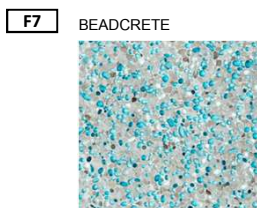
ROYAL SANVI STONE BIANCO
60 X 60 9mm.Thk. (MATT)
750 ₺/sq.m.



PRIME WHITE
60 X 60 9mm.Thk. (GLOSS)
450 ₺/sq.m.



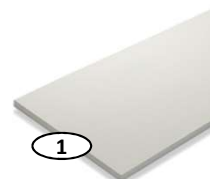
BLUE STONE
30X60 cm.



BEADCRETE

2000 ₺+/sq.m.

SPECIFICATION : CEILING PANELS

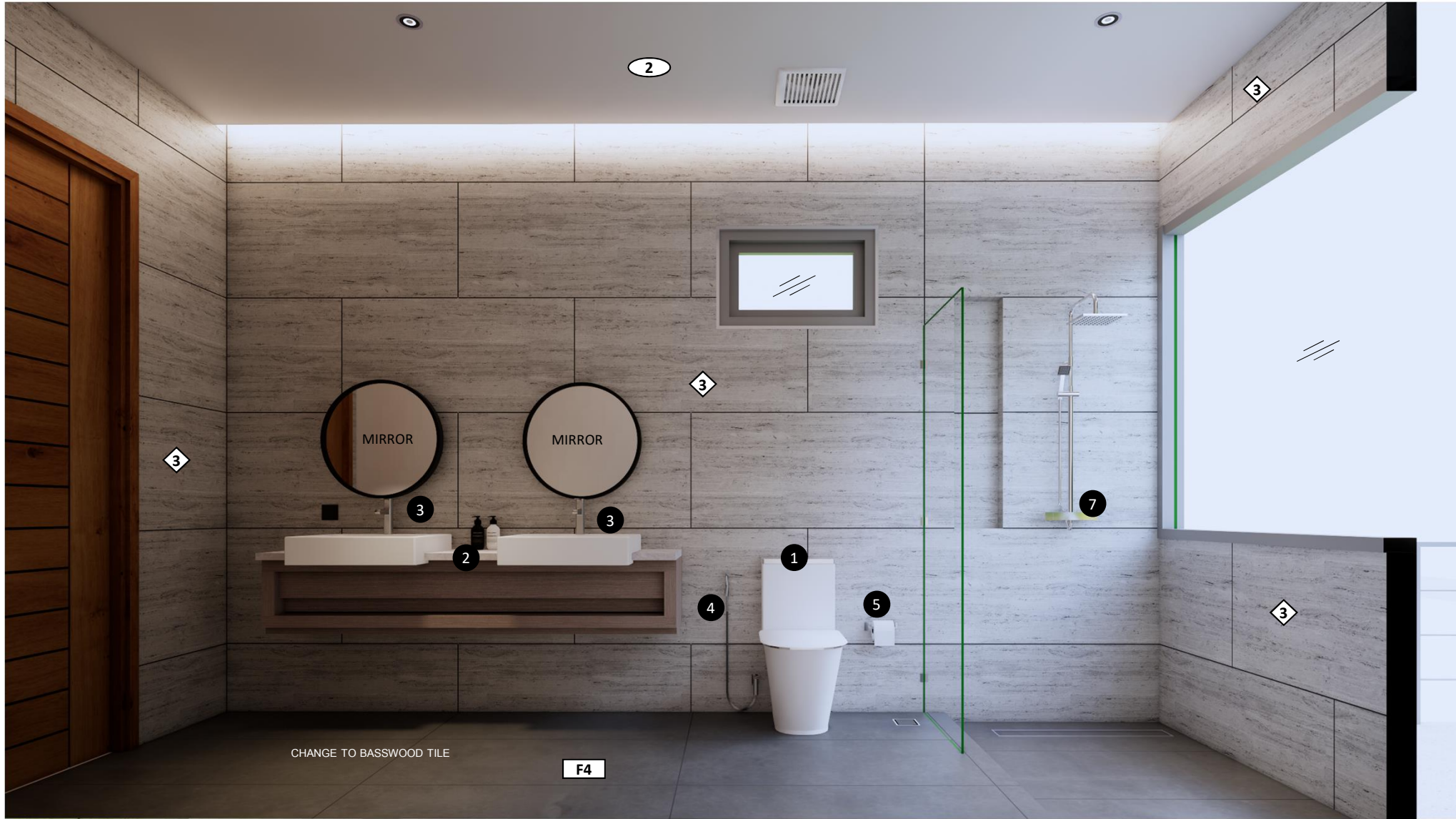


GYPSUM BOARD PLASTERING
COLOR PAINT

SPECIFICATION : WALL FINISHED



TOA : K7042 WHITISH
EXTERIOR : SUPER SHIELD
INTERIOR : DURACLEAN



SPECIFICATION : FLOOR FINISHED

20 X 120 9mm.Thk.
(NATURAL)



F4

BASS WOOD

750฿/sq.m.

SPECIFICATION WLL FINISHED

60 X 120 9mm.Thk. (RUSTIC R9)



3

TILE : ROYAL TRAVERTINE GREY

750 ฿/sq.m.

SPECIFICATION : CEILING PANELS



2

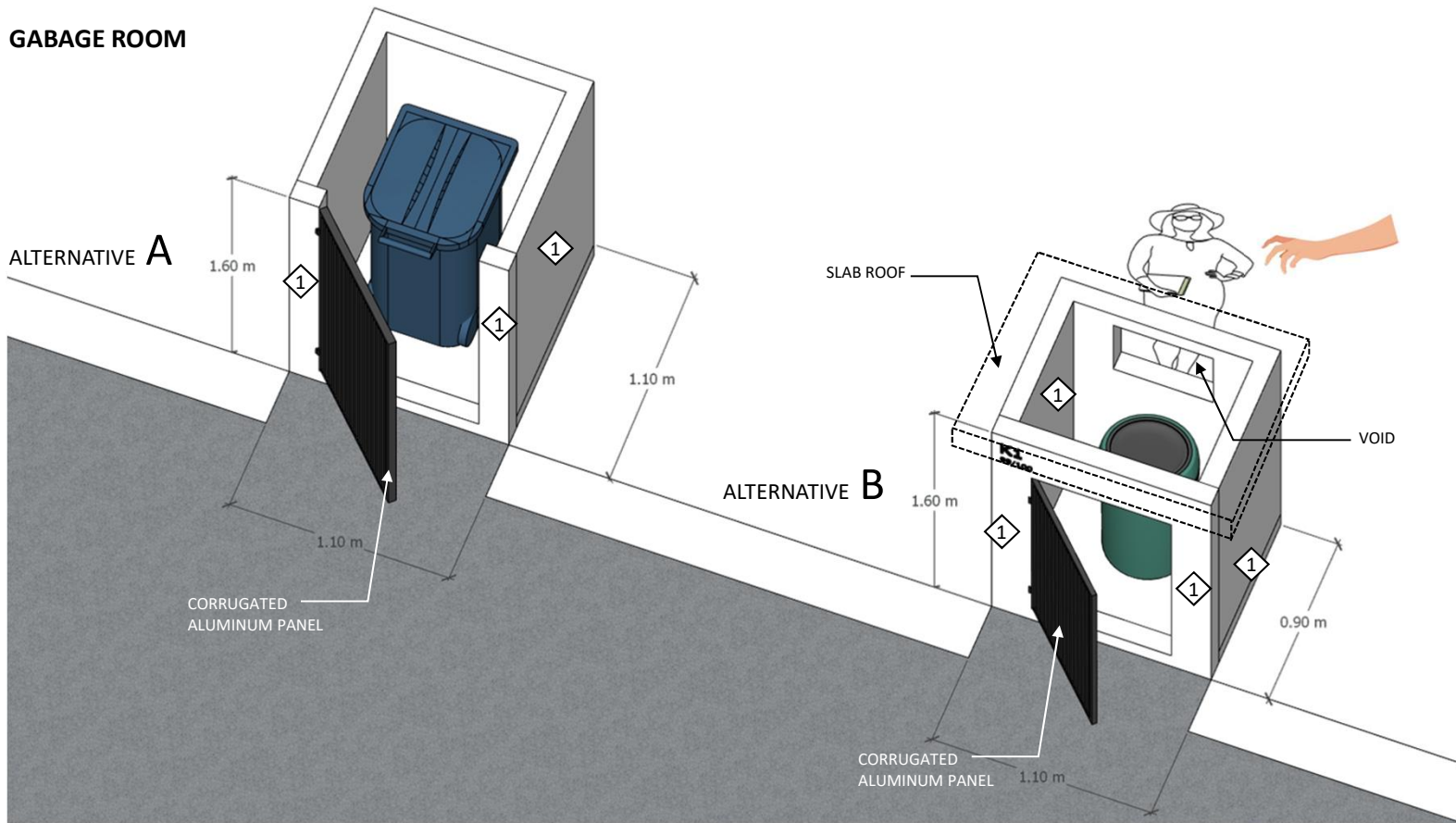
MOISTURE RESISTANT
GYPSUM BOARD COLORPAINT

ISSUE DATE 2025 08 05



MATERIAL FOR CONSTRUCTION
**KA VILLAGE
PHUKET**

GABAGE ROOM

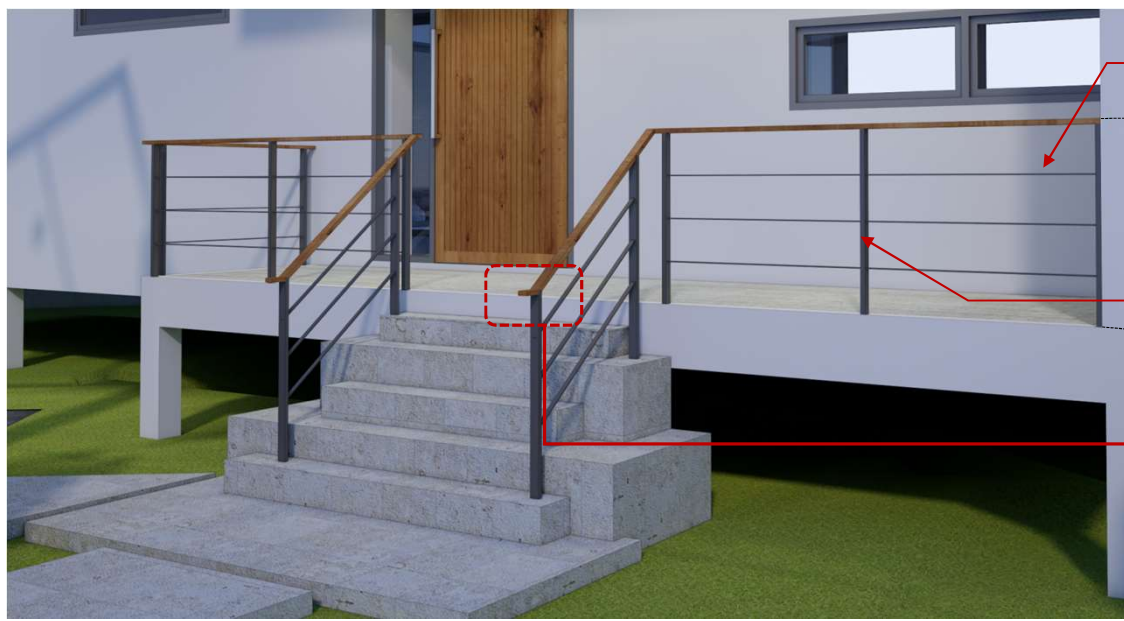


SPECIFICATION : WALL FINISHED



TOA : K7042 WHITISH
SUPER SHIELD

CORRUGATED
ALUMINUM PANEL



**ALU. TUBE
50x25x2 MM.
WITH ENAMEL
PAINT FINISH**

**ALU. TUBE
50x50x2 MM.
WITH ENAMEL
PAINT FINISH**

1000

RLD2-04
ขนาด 45x90 มม.

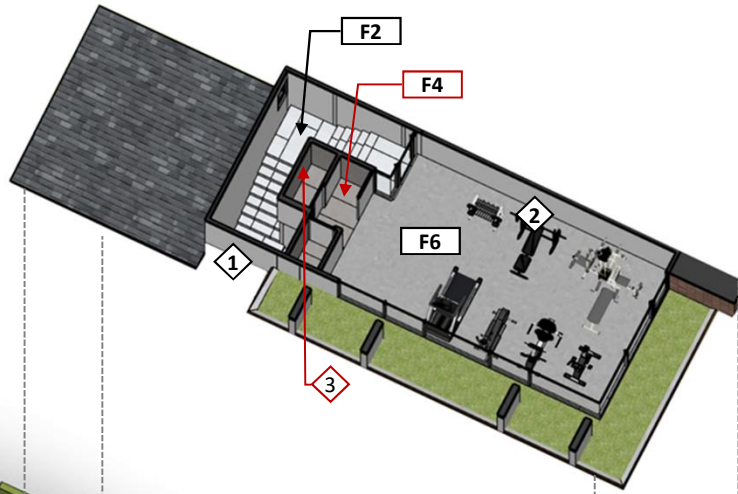
ไม้มือจับราว / กันตก
ตามแนวทางเดิน

ISSUE DATE 2025 08 05
MATERIAL FOR CONSTRUCTION
**KA VILLAGE
PHUKET**

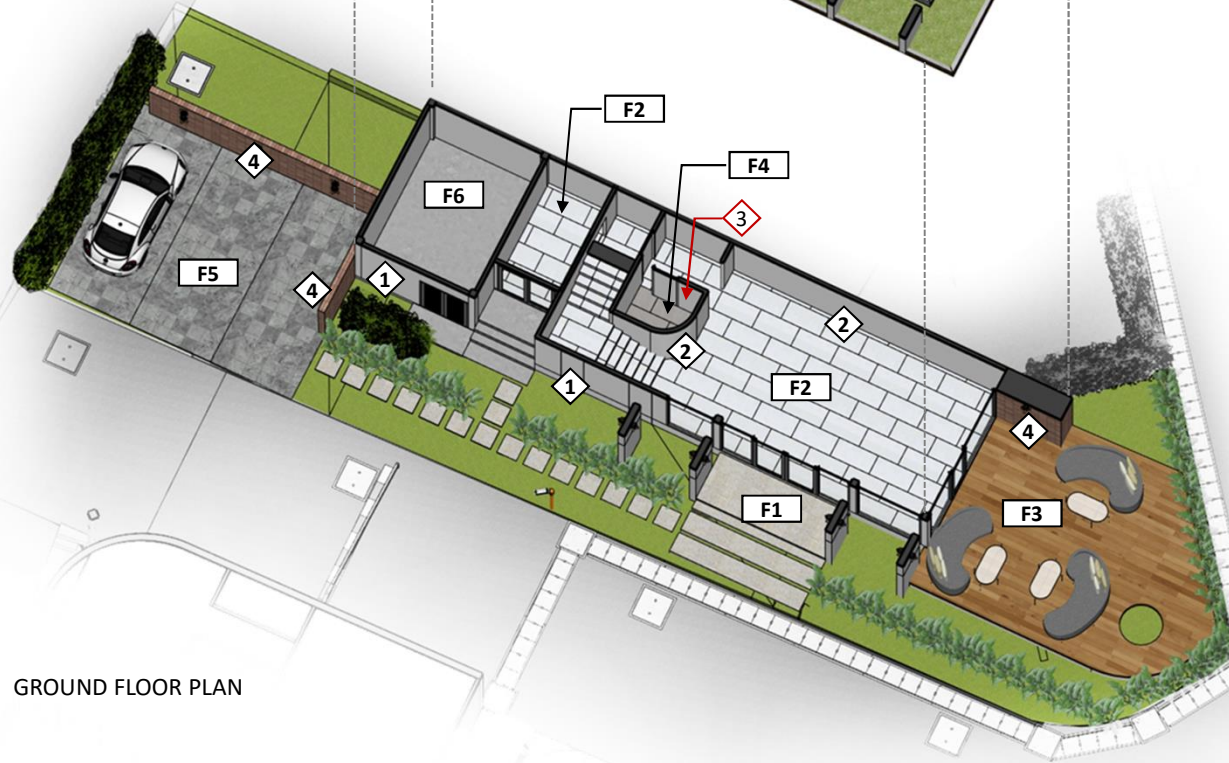


CLUB HOUSE

SECOND FLOOR PLAN



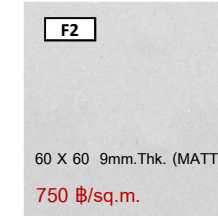
GROUND FLOOR PLAN



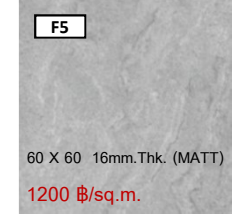
SPECIFICATION : FLOOR FINISHED



PRIME CENTRO NERO



ROYAL SANVISTONE BIANCO



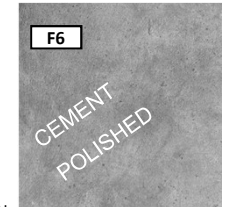
PRIME SINCRO GRAPHITE



ROYAL BLASSWOOD NATURAL



PRIME GRANITI GRIS



SPECIFICATION : WALL FINISHED

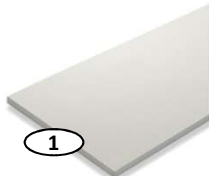


ISSUE DATE 2025.08.05



MATERIAL FOR CONSTRUCTION
KA VILLAGE PHUKET

SPECIFICATION : CEILING PANELS



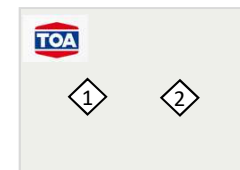
GYPSUM BOARD PLASTERING COLOR PAINT



MOISTURE RESISTANT GYPSUM BOARD COLORPAINT



ARTIFICAIL WOOD



TOA : K7042 WHITISH
EXTERIOR : SUPER SHIELD
INTERIOR : DURACLEAN

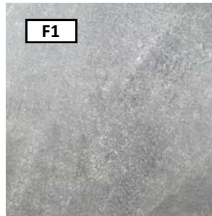


MATERIAL FOR CONSTRUCTION
**KA VILLAGE
PHUKET**



CLUBHOUSE

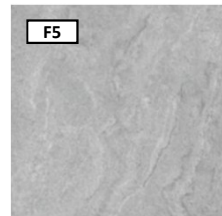
SPECIFICATION : FLOOR FINISHED



F1
PRIME CENTRO NERO
60 X 60 9mm.Thk. (MATT)
450 ฿/sq.m.



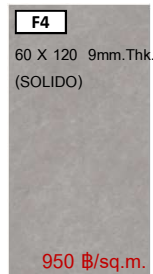
F2
ROYAL SANVISTONE
BIANCO
60 X 60 9mm.Thk. (MATT)
750 ฿/sq.m.



F5
PRIME SINCRO GRAPHITE
60 X 60 16mm.Thk. (MATT)
1200 ฿/sq.m.



F3 ROYAL BLASSWOOD
NATURAL
20 X 120 9mm.Thk. (MATT)
750 ฿/sq.m.



F4
ROYAL LISTELLO GRIS
60 X 120 9mm.Thk.
(SOLIDO)
950 ฿/sq.m.

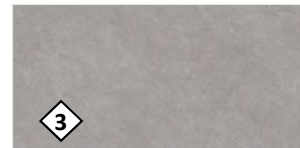


F5 (OPTION)
PRIME GRANITI GRIS
60 X 60 9mm.Thk. (MATT)
450 ฿/sq.m.

SPECIFICATION : WALL FINISHED



1
TOA : K7042 WHITISH
EXTERIOR : SUPER SHIELD
INTERIOR : DURACLEAN

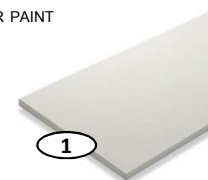


3
ROYAL LISTELLO GRIS
650 ฿/sq.m.

SPECIFICATION : CEILING PANELS



4
CEMENT CEILING BOARD SCG
COLOR PAINT



1
GYPSUM BOARD PLASTERING
COLOR PAINT



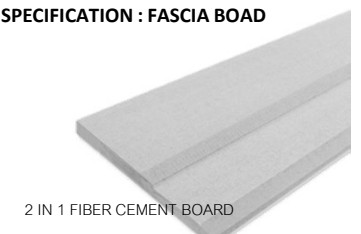
2
MOISTURE RESISTANT
GYPSUM BOARD COLORPAINT

SPECIFICATION : ARTIFICIAL WOOD



ARTIFICIAL WOOD (PRANK)
1743 ฿/sq.m.
iW1-95
● ทน (ขนาด) : 15
● กว้าง (ขนาด) : 95
● ยาว (ขนาด) : 300
● แผ่น/ตรม. : 3.5
● น้ำหนัก (กก./แผ่น) : 15

SPECIFICATION : FASCIA BOAD

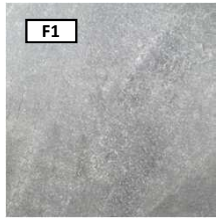


2 IN 1 FIBER CEMENT BOARD

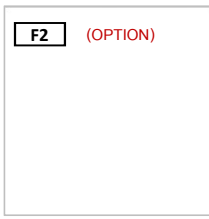


CLUBHOUSE

SPECIFICATION : FLOOR FINISHED



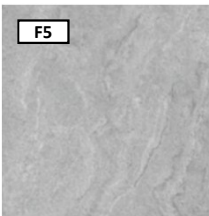
F1
PRIME CENTRO NERO
60 X 60 9mm.Thk. (MATT)
450 ฿/sq.m.



F2 (OPTION)
PRIME WHITE
60 X 60 9mm.Thk. (GLOSS)
450 ฿/sq.m.



F2
ROYAL SANVISTONE
BIANCO
60 X 60 9mm.Thk. (MATT)
750 ฿/sq.m.



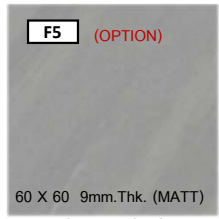
F5
PRIME SINCRO GRAPHITE
60 X 60 16mm.Thk. (MATT)
1200 ฿/sq.m.



F3
ROYAL BLOSSWOOD
NATURAL
20 X 120 9mm.Thk. (MATT)
750 ฿/sq.m.



F4
60 X 120 9mm.Thk.
(SOLIDO)
950 ฿/sq.m.

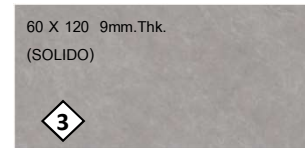


F5 (OPTION)
PRIME GRANITI GRIS
60 X 60 9mm.Thk. (MATT)
450 ฿/sq.m.

SPECIFICATION : WALL FINISHED



TOA : K7042 WHITISH
EXTERIOR : SUPER SHIELD
INTERIOR : DURACLEAN

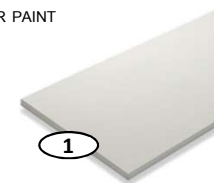


ROYAL LISTELLO GRIS
950 ฿/sq.m.

SPECIFICATION : CEILING PANELS



CEMENT CEILING BOARD SCG
COLOR PAINT



GYPSUM BOARD PLASTERING
COLOR PAINT



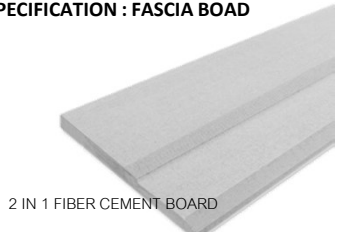
MOISTURE RESISTANT
GYPSUM BOARD COLORPAINT

SPECIFICATION : ARTIFICIAL WOOD



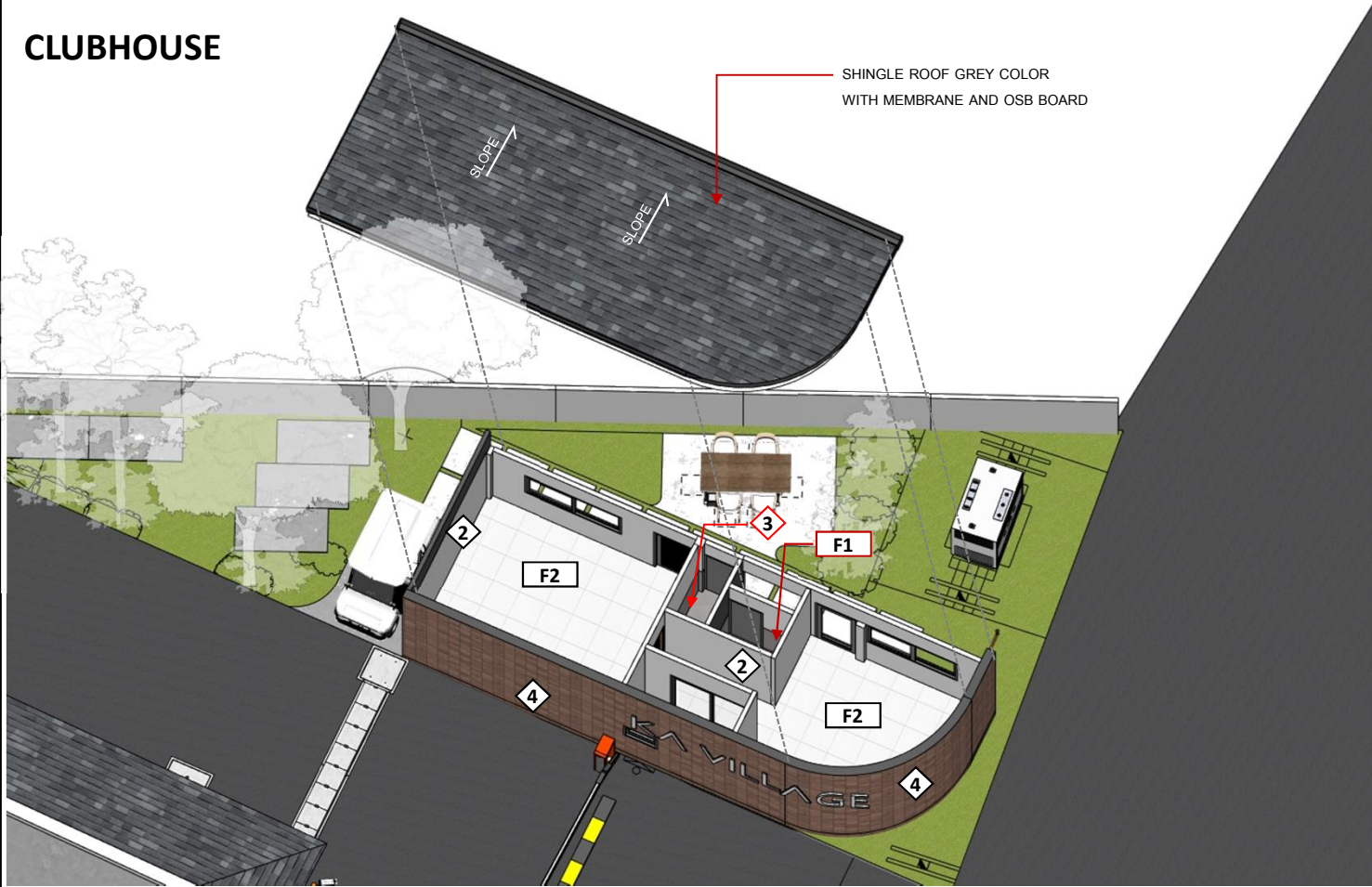
ARTIFICIAL WOOD (PRANK)
1743 ฿/sq.m.
iW1-95
● ทน (ทน.) : 15
● ทนไฟ (ทน.) : 95
● ยาว (ทน.) : 300
● หนา/ตม. : 3.5
● น้ำหนัก (กก./แผ่น) : 15

SPECIFICATION : FASCIA BOARD

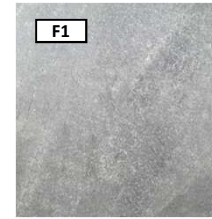


2 IN 1 FIBER CEMENT BOARD

CLUBHOUSE

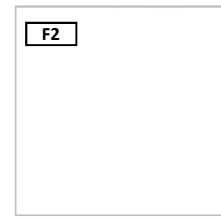


SPECIFICATION : FLOOR FINISHED



PRIME CENTRO NERO

60 X 60 9mm.Thk. (MATT)
450 ฿/sq.m.



PRIME WHITE

60 X 60 9mm.Thk. (GLOSS)
450 ฿/sq.m.

SPECIFICATION : WALL FINISHED



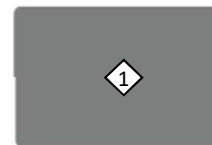
PRIME CENTRO NERO

60 X 60 9mm.Thk. (MATT)
450 ฿/sq.m.



EXTERIOR : SUPER SHIELD

INTERIOR : DURACLEAN



TOA K7081
Natural Gray



TOA K7042
WHITISH

SPECIFICATION : ROOF FINISHED



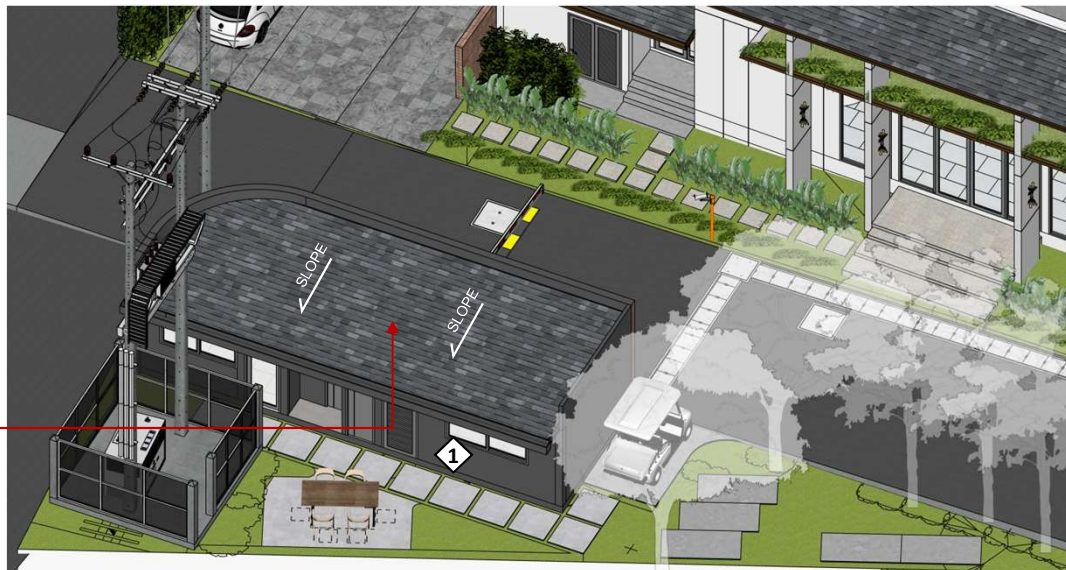
SHINGLE ROOF GREY COLOR
WITH MEMBRANE AND OSB BOARD

ISSUE DATE 2025 08 05



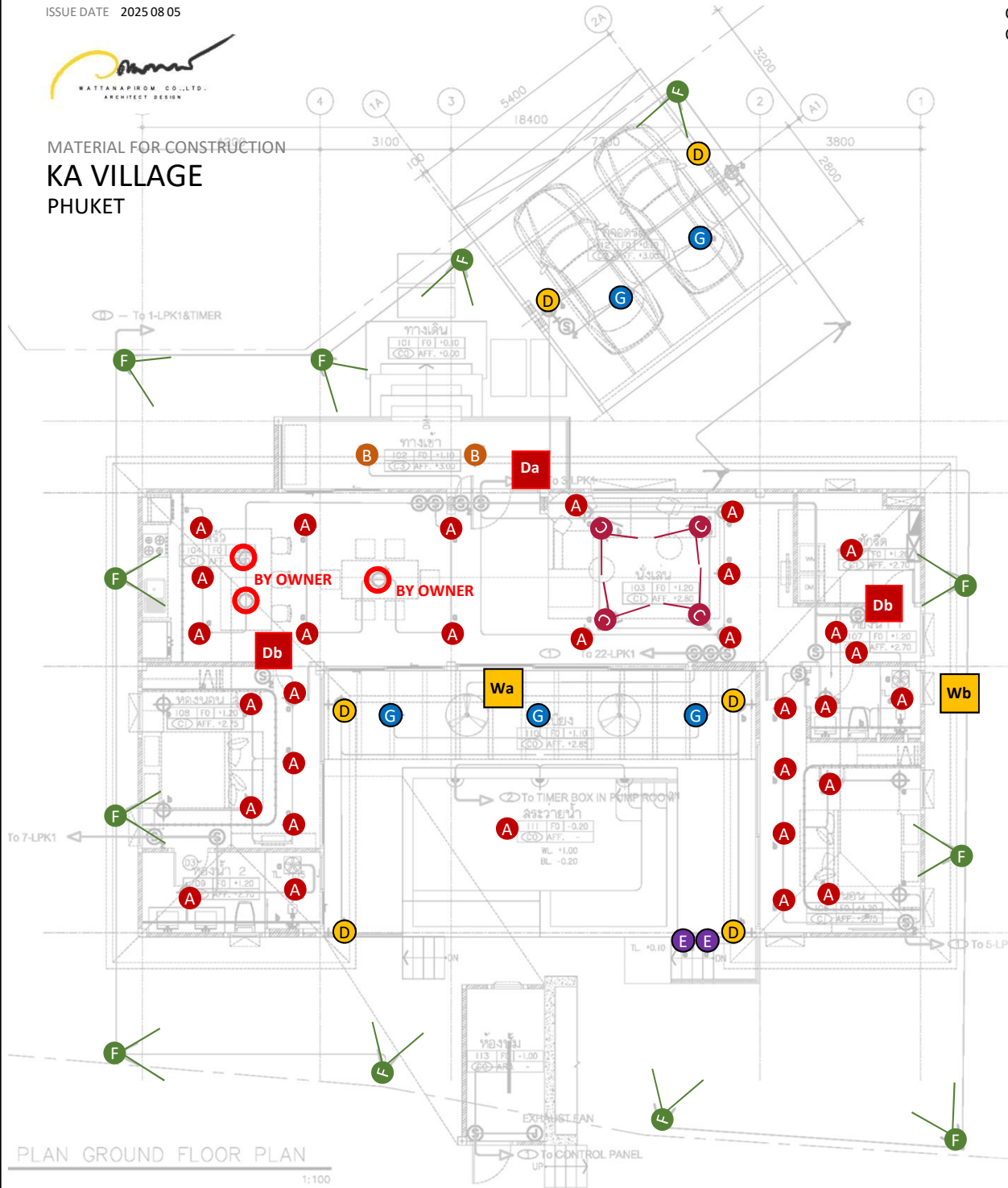
MATERIAL FOR CONSTRUCTION
KA VILLAGE
PHUKET

SHINGLE ROOF GREY COLOR
WITH MEMBRANE AND OSB BOARD





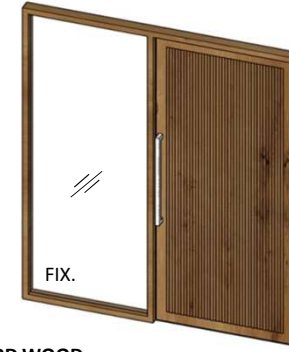
MATERIAL FOR CONSTRUCTION
KA VILLAGE
PHUKET



PLAN GROUND FLOOR PLAN
1:100

ENTANCE DOOR
OPTION A = HARD WOOD
OPTION B = ALUMINIUM

Da



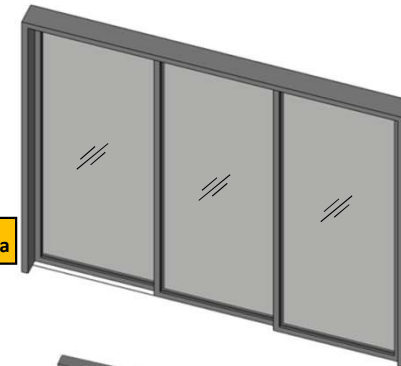
ROOM DOOR
OPTION A = HARD WOOD
OPTION B = HMR + LAMINATE

Db



ALUMINIUM 1.5 mm.Thk.
POWDER COAT EURO PROFILE
CLEAR LAMINATE GLASS 4+4 mm.

Wa



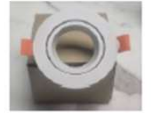
Wb



WINDOW TYPE

DL-01

A



DL-02

B



DL-03

C



DL-04

D



LD-05

E



LD-06

F



DL-07

G

